



Borough of Telford and Wrekin

Cabinet

Tuesday 6 January 2026

Telford & Wrekin Becoming Carbon Neutral and Climate Change Adaptation - update report

Cabinet Member:	Cllr Carolyn Healy - Cabinet Member: Neighbourhoods, Planning & Sustainability
Lead Director:	Katherine Kynaston - Director: Housing, Commercial & Customer Services
Service Area:	Communities, Customer & Commercial Services
Report Author:	Ian Wykes - Team Leader - Climate Change & Sustainability
Officer Contact Details:	Tel: 01952 384960 Email: Ian.Wykes@telford.gov.uk
Wards Affected:	All Wards
Key Decision:	Not Key Decision
Forward Plan:	Not Applicable
Report considered by:	SMT – 2 December 2025 Business Briefing – 11 December 2025 Cabinet – 6 January 2026

1.0 Recommendations for decision/noting:

It is recommended that Cabinet:

- 1.1 Notes the positive progress the Council has made in its journey to become carbon neutral by 2030 and that at by the end of March 2025 it has now reduced its carbon emissions by **63% from a 2018/19 baseline.**
- 1.2 Notes the importance of climate adaptation and the additional work the Council has done to develop a corporate climate change risk register as set out in Appendix B

Telford & Wrekin Becoming Carbon Neutral and Climate Change Adaptation - update report

- 1.3 Notes that this report is in relation to the Council's response to the Climate Emergency Declaration and will be referred to Full Council for information as part of the 'Matters Determined by the Cabinet' report

2.0 Purpose of Report

- 2.1 To update Cabinet on progress being made to meet the Council's target of becoming carbon neutral by 2030 and meeting the challenges of current and future impacts of a changing climate.

3.0 Background

- 3.1 In 2019 Telford and Wrekin Council declared a Climate Emergency and set out an ambitious target to ensure its activities and operations are carbon neutral by 2030. This is known as **climate change mitigation**. The Council is delivering this through its 'Becoming Carbon Neutral Plan', reporting annually on progress to Cabinet. The Council also made a commitment to work with partners with the aim of achieving the same target across the Borough.
- 3.2 As a local authority, Telford & Wrekin Council must also ensure that its services are able to react to the current and future predicted impacts that climate change is having. This is referred to as **climate change adaptation**. In 2024 the Council published its first Corporate Climate Change Risk register to help address the impact of climate change on its own services. The Council is committed to reporting on its progress on climate change adaptation on an annual basis. The Council is also working with partners to help address the impacts of climate change across the whole borough.
- 3.3 In recognition of the strong synergies between climate change mitigation and adaptation, it is now proposed that both areas be reported together within a single, integrated report which is the aim of this current report.
- 3.4 Climate change continues to be one of the most significant issues that affects Telford and Wrekin, its residents, communities, and businesses and remains one of the Council's five key priorities.
- 3.5 We have made strong progress in reducing the Council's emissions so far, but we recognise that it is getting harder and more challenging to do. It is still the right thing to do reinforced by the wider benefits we are seeing to our residents and communities including:
- The recent upgrades at Oakengates Leisure Centre have significantly enhanced the leisure offering while simultaneously reducing carbon emissions by 161 tonnes of CO₂ equivalent per year. In addition, energy costs have been cut by 45%, enabling savings to be reinvested into front line services.

- Initiatives such as the **Bike Hub** support residents to make the switch from the use of their cars for some trips reducing emissions but also provide opportunities for leisure and resultant health benefits.
- The investment we are making into housing whether through **NuPlace, Warm and Well Telford** and our various retrofit programmes will provide properties that are more affordable to heat thereby supporting residents to address rising energy costs, tackling fuel poverty and health impacts of living in cold and damp properties.

3.6 These co-benefits show that the investment we are making provides long-term gains in health, cost of living and resilience.

3.7 There are also actions the Council is seeking to address that are affected by factors outside of its control. For example, electrical grid connections remain a huge constraint on the expansion of renewable energy generation locally and nationally. The Council, working with partners, is continuing to lobby and work with Government and National Grid to overcome barriers to delivery.

Public Attitudes Towards Climate Change and Renewable Technologies

3.8 Public opinion on climate change and the adoption of renewable technologies has remained relatively consistent in recent years. A government survey conducted in Spring 2025¹ found that 77% of respondents remain concerned about climate change, indicating sustained public engagement with environmental issues. Furthermore, awareness of the national Net Zero Target remains high, with 88% of respondents familiar with the goal, suggesting that national messaging continues to resonate with the public.

3.9 Complementing this, data from the Office for National Statistics (2024)² revealed that 76% of individuals have made lifestyle changes aimed at reducing their environmental impact. This reflects a strong willingness among the public to continue to take personal action in support of climate objectives.

3.10 At the local level, the Council's most recent **Resident's Survey** provides further insight into community sentiment. When asked to rate their concern about the impacts of climate change on a scale from 1 to 10 (where 1 indicates no concern and 10 indicates extreme concern), 63% respondents gave it a score of 7 or over with 22% of respondents scoring 10.

4.0 Summary of main proposals

Climate Change Mitigation - Carbon Neutral Action Plan:

¹ DESNZ Public Attitudes Tracker: Headline Findings Spring 2025, UK

² Public and business attitudes to the environment and climate change, Great Britain - Office for National Statistics

Telford & Wrekin Becoming Carbon Neutral and Climate Change Adaptation - update report

- 4.1 The Council's Corporate Action Plan, 'Becoming Carbon Neutral,' is a live, working document which is reviewed and updated on an ongoing basis. It encompasses actions from all areas of the Council's operations and is formally refreshed annually. It reflects the Councils' priorities for climate change; to decarbonise the corporate estate, explore the feasibility of renewable energy generation and support communities in decarbonisation
- 4.2 The Action Plan is divided into the following themes:
- Adaptation
 - Affordable Warmth
 - Biodiversity & Carbon Sequestration
 - Borough Resources/Waste
 - Corporate Catering
 - Corporate Estate
 - Highways and Transport
 - Investment in Business
 - Planning Policy
 - Plastic Free
 - Communications and Engagement
 - Performance and Monitoring
- 4.3 A high-level summary of the Carbon Neutral Action Plan can be found in Appendix A of this report.

Key climate change actions in 2024/25

- 4.4 Since the last report, the Council has progressed a wide range of decarbonisation projects as illustrated by the following case studies compiled by theme:

Corporate Estate

- 4.5 **Wellington Leisure Centre:** Following a bid to the Salix Public Sector Decarbonisation Scheme (PSDS) Phase 3c. In April 2024, the Council was awarded £1.1 million to deliver a package of energy efficiency improvements. These include upgrades to the building's thermal fabric and the installation of an air source heat pump, which is projected to reduce carbon emissions by approximately 70 tonnes of CO₂ equivalent per year. Works commenced in September 2024, with the facility officially reopening on 26 August 2025.

In addition to the decarbonisation measures, a series of enhancements have been undertaken to improve the swimming pool environment for users. These include:

- Installation of new lighting
- Refurbishment of the pool promenade
- Upgraded ventilation systems

- A comprehensive redecoration programme

The changing rooms have also been refurbished, featuring new showers, lockers, and cubicles to improve the overall user experience.

- 4.6 **Newport Swimming Pool & Fitness Centre:** A successful bid to the Swimming Pool Support Fund (SPSF) Phase II has secured £41,800 of grant funding to install pool covers and replace fluorescent lighting with LED lighting. Both measures will increase energy efficiency on site, resulting in estimated annual cost savings of £11,500 for the pool cover and £1,300 for LED lighting. Works were completed in October 2024.



- 4.7 **Telford Theatre** The redevelopment of Telford Theatre in Oakengates is designed with a 'fabric first' approach. The project design team have incorporated low power LED lighting, the reuse of existing solar panels and a thermal specification that goes beyond building regulation standards to increase the energy performance of the new Telford Theatre building. In addition, heating and ventilation systems will incorporate renewable technologies such as air source heat pumps, and current roof plans incorporate a significant array of photovoltaic panels. This will all result in a theatre with a significantly lower operational carbon requirement than the existing building which is now over 60 years old. Initial demolition works have now started, with the main construction work on the new building to start in 2026.



- 4.8 Telford & Wrekin Council has submitted plans for the new **Captain Matthew Webb Swimming and Fitness Centre in Dawley**. This project addresses an identified local need by enabling residents to swim within their own community, while reinforcing the Council's commitment to sustainable development and enhancing community wellbeing. The proposed facility, located at Telford Langley School, will include a five-lane swimming pool and an expanded health and fitness suite. Designed with sustainability at its core, the centre will prioritise low energy consumption and reduced carbon emissions, supporting the Council's ambition to achieve carbon neutrality. The Dawley location was selected following a detailed site review, addressing the area's significant unmet demand for swimming provision.

The development will:

- Enable over 150,000 swims annually
- Expand the learn-to-swim programme by 150 places per week
- Increase community fitness access by 50 hours per week

Subject to planning approval, the centre is expected to open in early 2027, creating over 20 local jobs and contributing to the Council's wider goal of building a greener, healthier borough

Property Investment Portfolio

- 4.9 Work to improve the efficiency of the Council's Property Investment Portfolio (PIP) has continued. In previous years this has included LED lighting installed at Southwater One carpark and LED lighting and solar PV panels installed in the industrial units at Hortonwood 12, Newport Innovation Park PH2 & Orchard Park. Further opportunities to increase the amount of solar PV panels installed on PIP properties are currently being reviewed.

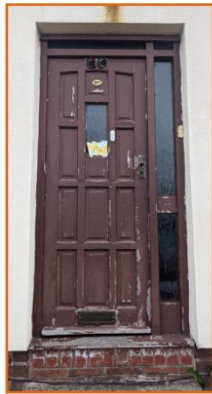
Affordable Warmth and Housing

- 4.10 The Council has previously delivered a wide range of projects to support people in fuel poverty including 10 off gas properties (22 measures) were retrofitted using funding from Phase 1 of the Home Upgrade Grant (HUG1). The Local Authority Delivery Scheme (LAD2) scheme was used to retrofit 50 homes in Sutton Hill, with 77 energy efficiency measures, including external wall insulation, loft insulation, cavity wall insulation, double glazing and solar panels. This programme of works improved the energy efficiency rating of properties as well as reducing residents' heating bills by up to £640 a year and saving up to 600 kilograms of CO₂e emissions each year.
- 4.11 Additional work this year has included:
- Through our **Warm and Well Telford** grant we are providing partial glazing, external doors and heating controls for eligible properties. This grant extends eligibility beyond that required by the government to reach more residents "in the gap". Residents may be eligible if gross combined household income is less than £50,000 per year, which means we can reach more people than by using the £36,000 gross combined household income threshold set by the government. So far 25 properties have been supported so far with another 11 in the pipeline.

Arleston

Before

The householder applied for the Warm and Well scheme as their front door was wooden. The door was rotting away and letting in draughts. TRVs were old and ineffective.



After

Householder comments:

"Excellent service, work was carried out very neat and very happy with the service."



- In a joint bid with Shropshire and Herefordshire, Telford & Wrekin Council were successful in securing Warm Homes Local Grant funding for all 3 authorities of £6,717,405. This funding will allow us to deliver **energy performance and low carbon heating upgrades to low-income homes** in the borough.
- The Council and partners have delivered the second phase of the **Home Upgrade Grant** aimed at low energy efficient off gas properties. The grant scheme delivery was completed in March 2025.

4.12 The Council continues to promote energy efficiency activities addressing fuel poverty for eligible residents through Telford Energy Advice (TEA). The TEA provides a free hotline for residents to call for information, advice and support. The latest Impact Report 2024 reported that since the inception of TEA:

- Around 4,300 households reached
- 350 home visits completed
- 1,400 energy advice calls made
- 360 frontline workers trained
- 1,100 energy-saving measures distributed
- 300 homes received funded insulation or heating
- 200 households supported with crisis funding (debt relief, energy top-ups, emergency heating, etc.)
- £9,300 in direct financial gains for residents
- £75,600 in total household savings from advice and support

4.13 Over the next two years in partnership with the Marches Energy Agency the Council is supporting the **Future Ready Homes initiative**. This is aimed at the self-funded market. The project will help **2,500 householders** navigate the complex world of retrofit and providing support throughout installation of works to ensure residents are getting the correct advice and quality from contractors. By working with local businesses, the project will also provide training opportunities to develop much needed local retrofit skills.

- 4.14 The **Retrofit Skills Home** project complements Future Ready Homes providing residents with an opportunity to view measures in a 'show home' with regular open days, webinars, video tours and case studies. Telford College construction students are collaborating with Marches Energy Agency and The Wrekin Housing Group on a real-life house renovation project in Arleston, Wellington. This initiative aims to transform a vacant property into an energy-efficient home, serving as a hands-on learning facility for students to acquire both traditional building skills and modern retrofit techniques. The project includes adding insulation, eliminating draughts, and installing green technologies like solar panels and heat pumps, which are essential for reducing carbon emissions and making homes more sustainable.
- 4.15 The project is supported by Telford and Wrekin Council and funded by the **Energy Saving Trust**. It will feature regular open days and online updates to engage the public and showcase the progress. The initiative addresses the boroughs need for skilled workers in home energy efficiency and aims to educate both staff and tenants on future-proofing homes.
- 4.16 **NuPlace**, the Council's wholly owned housing company, continues to focus on delivering sustainable, energy efficient properties for private rent. To date 132 properties have been completed across Telford incorporating solar panels and EV charging points, saving residents money and reducing their emissions.
- 4.17 In addition, 18 of these homes at Wildwalk, in Donnington, were built to Future Homes Standards incorporating timber frame construction, and air source heat pumps. The team are continuing to monitor energy use and customer satisfaction to understand how these dwellings perform now occupied. A "12 Month On" tenant case study is to be developed exploring how the occupier is finding living in a Future Home.
- 4.18 A further 161 low energy homes are under construction for Nuplace across a diverse range of sites including refurbishments and conversions and new build scheme.
- 4.19 117 of these homes are located in Station Quarter, within Telford Town Centre, with properties all set to achieve EPC (Energy Performance Certificate) "A" rating in terms of environmental impact and EPC "B" rating for energy efficiency. Work is progressing well on the 84-dwelling state-of-the art apartment block which will bring town centre living to Telford Town Centre alongside 33 town houses and maisonettes. In July 2025 a topping out ceremony was staged to mark the new apartments at Station Quarter reaching their highest point with completion due in March 2026.



- 4.20 Nuplace secured £4.725m grant funding from WMCA to deliver a mixed-tenure housing scheme in the town centre, offering high-quality homes in a sustainable location with amenities nearby. Sustainability drives the Station Quarter design, incorporating low-carbon technologies and infrastructure that promotes walking, cycling, rail, and bus travel. A Car Club will support short-term car rentals, reducing reliance on private vehicles and encouraging greener choices for residents and visitors.
- 4.21 Nuplace homes are fully electric with no gas, in line with emerging Future Homes legislation. Heating is provided through a mixture of electric panel heaters and storage heaters with heat loss minimised through a fabric first approach to build and the use of PVs to minimise energy costs for residents. Throughout the wider Station Quarter development, native planting coupled with an innovative approach to sustainable drainage, including the creation of rain gardens, will deliver biodiversity enhancements.
- 4.22 Through the **LED Bulb Distribution Scheme**, the Council has provided 16,184 energy saving LED bulbs distributing them via community organisations, Town and Parish Councils and housing trusts. The scheme is set to continue helping those residents at risk from the cost-of-living crisis to reduce their electricity bills, while also reducing greenhouse gas emissions.

Transport

- 4.23 As part of our home to school transport operations, the council secured an electric minibus to add to our fleet of 15 EV's across service areas. This minibus has been in operation since July 2025. Furthermore, in November 2025, the council through the Travel Telford bus network undertook a two-week trial of a electric bus as part of our continued commitment to delivering zero-emission public transport. The vehicle covered 1,800km during the two weeks saving 2.3t CO₂e and data from this trial will shape future investment into electric buses for the borough's wider public bus network.
- 4.24 The Council was awarded £683,370 from **On-street Residential Charge Point Scheme (ORCS)** for the installation of 70 dual fast EV charge points in Council car parks to support residential charge points. The Council has appointed an EV charge point operator who will deliver the ORCS funded charge points but will also fully fund additional EV charge points in Council car parks. Overall, this project could see an additional 104 EV charge points (208 sockets) installed
- 4.25 The Council has also been awarded £1,020,000 from **Local EV Infrastructure fund (LEVI)**. The Council has joined Midlands Connect Consortium with other Local Authorities to maximise the number of on-street charge points. It is anticipated the first on-street EV charge points would be installed from 2026 and rolled out over a five-year period.

- 4.26 In October 2025 the Council consulted with the public, businesses, and taxi & private hire drivers as part of the refresh of the Council's Electric Vehicle (EV) Charging Infrastructure Strategy. The updated strategy aims to accelerate the borough's transition to electric vehicles by ensuring charging infrastructure is accessible, equitable, and aligned with local needs.

Active Travel

- 4.27 Active travel initiatives are vital because they reduce carbon emissions from vehicles, helping tackle climate change, while also improving physical health, boosting mental wellbeing, and fostering healthier, more active lifestyles for children and communities.:
- 4.28 **The New School Journey project** is a year-long initiative promoting active travel and road safety in schools across Telford & Wrekin. So far, 11 schools have participated, with evaluation data showing a marked shift from car use to walking, cycling, and scooting.
- 4.29 Key outcomes from 2023–24 include:
- **Ladygrove Primary:** Car travel dropped from 141 to 63 pupils; walking and park & stride increased.
 - **Meadows Primary:** Car use fell from 188 to 57 pupils; walking and cycling rose.
 - **Newport Juniors & Infants:** Similar reductions in car travel and growth in active modes.
- 4.30 Pupil surveys revealed strong interest in cycling and scooting, suggesting further potential if infrastructure and support continue. The project also includes air quality education, delivered with the Environmental Team. Pupils attend workshops and assemblies on pollution and environmental protection. When pupils were asked what the advantages were responses included “good for your heart and mental health”, “avoids traffic and doesn't pollute” and “you can chat with friends”.
- 4.31 Air quality monitors are installed at the start and end of the project to assess impact.
- 4.32 Community engagement is central, with events like Bike Buses and Group Walks to School. Lawley Village Academy's recent walk drew around 200 participants, showing strong local support.
- 4.33 **Bikeability Cycle Training.** Bikeability is the national cycle training programme, helping people gain confidence and skills to cycle safely. In 2024–25, Telford & Wrekin saw major growth:

- 1,281 pupils trained, up from 869 in 2023–24—a 47% increase, the highest in England.
- Ranked 5th nationally for delivery growth over two years.
- Introduced Level 3 training, with 46 secondary pupils completing advanced road cycling skills.
- Added a fleet of 20 adapted cycles (hand cycles, trikes, tandems), improving access for SEND pupils.

Renewable Energy Generation

- 4.34 The Council-owned **Wheat Leasows solar farm** continues to generate renewable energy. In 2024/25 the solar farm produced 3144 MWh of electricity, enough energy to power 1084 homes per year (based on average annual household consumption of 2,900 kWh). With the solar farm continuing to bring benefit across communities through the sale of the energy generated back to the grid, which is then invested back into front line services, the Council is exploring the feasibility of potential new solar generation within the borough.

Planning Policy

- 4.35 Climate change and sustainability is a key consideration in the review of the Local Plan which sets policies that ensure buildings are more efficient to run, are built from sustainable materials and practices, that carbon reductions are secured through the development process and in ensuring our natural resources are protected.
- 4.36 As the review progresses following the submission of the new Local Plan to the Planning Inspectorate, policies to support the Council's ambition to drive climate change action gain further weight.
- 4.37 The Council supports innovation in this area with existing policies designed to reflect the constant change and progression in this field and evidenced by the approval of a number of applications for renewable energy generation. The emerging Local Plan will reflect the more robust provisions for renewable and low-carbon energy set out in the National Planning Policy Framework.

Biodiversity

- 4.38 Protecting and enhancing Council-owned green spaces and nature reserves supports both climate adaptation and mitigation measures. Since the last report, the Council have been very proactive including:

- Expanding the number of wildflower areas across the borough, now covering 38 areas across 23 sites. A meadow establishment project is underway to overseed native perennial wildflowers in suitable locations such as verges, roundabouts, parks, and open spaces. One example is Randlay Spine, where amenity grassland has been successfully converted into a wildflower meadow.
- Partnering with Buglife on the 'B-line' project to combat pollinator decline by increasing connected wildflower-rich habitats in Telford and Shropshire. Completed in November 2024, the project also engaged local communities through events, education, and citizen science, raising awareness of UK pollinator species and empowering action for wildlife. Further wildflower seeding at Wombridge Green Guarantee site is planned for this autumn.
- Meadow cut areas are now part of all Green Flag Parks to balance nature conservation with recreational use. Additional nest boxes are being installed at Hartshill Park, and bat boxes at Dawley Hamlets Local Nature Reserve, Priorslee, Leegomery, and The Granville.
- A new community orchard has been planted in Wellington, with further tree planting in winter 2025/26.



- 4.39 The Local Nature Recovery Strategy, developed with Shropshire Council, is advancing rapidly. A steering group including the Environment Agency and Shropshire Wildlife Trust is in place, with adoption by both authorities expected in early 2026 after consultation and Defra approval. The strategy prioritizes peatland restoration, natural flood management, and urban cooling measures.
- 4.40 Dothill and Shawburch Local Nature Reserve join Telford Town Park, Bowring Park, Apley Woods, Hartshill Park, Dale End Park and Dawley Park in retaining Green Flag status. Victoria Park in Newport also received the award, bringing the total to eight Green Flags across the Borough. This international quality mark reflects the dedication of Council staff, volunteers and 'Friends Of' groups. Two new Local Nature Reserve sites are being submitted for 2026.

Borough Resources/Waste

- 4.41 In 2024/25, 16 local community groups benefitted from a share of £14,507 from Envirogrant. A further £15,493 is available in 25/26 opening for bids from local groups in August 2025. Pneuma Affinity CIC was awarded a grant in 2024 to deliver creative workshops exploring the themes of people, planet and connection. The result was The Mosaic of Harmony, created by members of the Telford Autism Hub, who made tiles and used them alongside reclaimed local tiles. The artwork is now installed in The Retreat Rooftop Garden at the shopping centre.



- 4.42 Also in 2025/26, as part of the Veolia Added Social Value fund, a further £10,000 has been agreed to support and expand reuse opportunities. Since April 2024, 11 sale events have taken place and 3 online auctions with nearly 100 tonnes of waste reused. Monthly sale and online auction events continue.
- 4.43 Alongside this education on food minimisation continues to be delivered jointly with Veolia. Multi language bin hangers and literature have been developed including Punjabi, Romanian and Polish to increase recycling participation. Monthly social media plans highlight the waste journey, recycling and waste minimisation along with an annual collection day calendar delivered to all residents with key messages on reduce, reuse, recycle.
- 4.44 Reintroducing food recycling within Council buildings is currently being investigated by Building Services. For schools, the Waste team can signpost food waste recycling collections and through the Services for Schools team a dry recycling collection is available for schools in Telford and Wrekin to buy into.

Catering Services

- 4.45 The Council's **Let's Dine** school catering service continues to offer options supporting healthier, low-carbon diets. Meat content in recipes has been reduced and replaced with alternative proteins to meet food standards while lowering environmental impact. Catering teams have worked closely with school action groups to eliminate 98% of single-use plastics. Regular reviews are conducted to identify more sustainable alternatives across all catering operations. Where possible, the service partners with local suppliers who share our commitment to quality and sustainability.
- 4.46 Used cooking oil is collected and recycled into biofuel, reducing food waste and supporting cleaner energy sources. Efforts are also underway to improve kitchen energy efficiency, with staff encouraged and trained to adopt more sustainable practices. To further reduce emissions, the Council is exploring the replacement of

three hired delivery vans with electric or hybrid alternatives, alongside assessing the feasibility of on-site vehicle charging infrastructure.

Carbon Emissions 2024/25

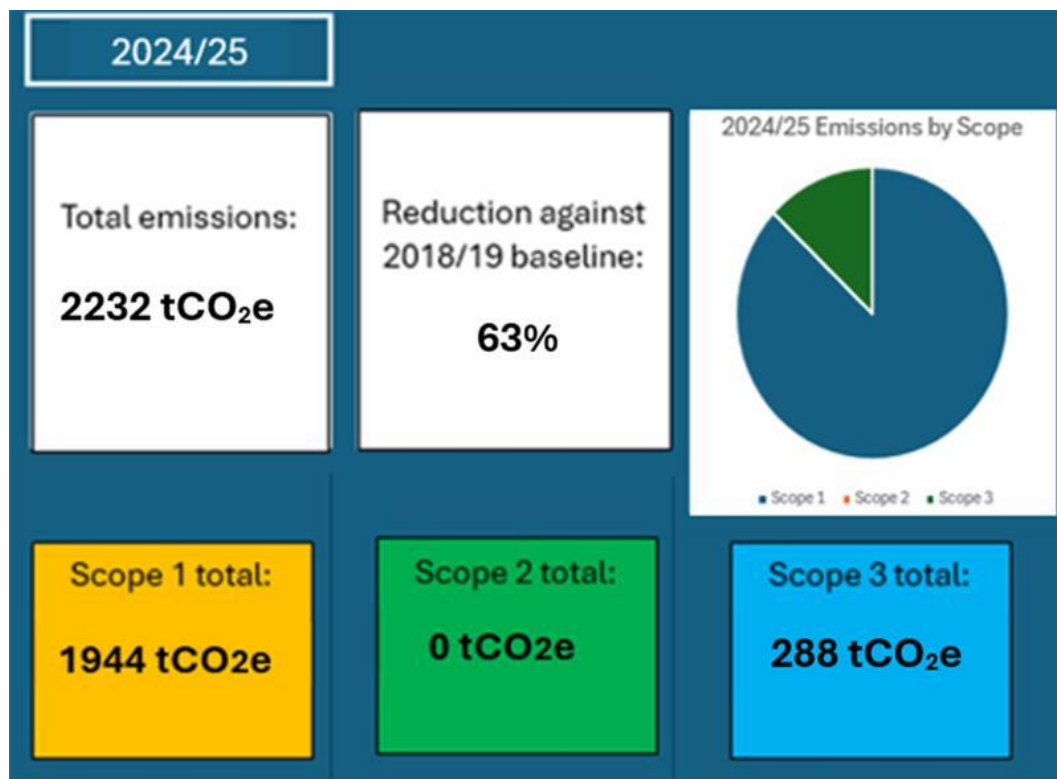
- 4.47 We continue to monitor our scope 1, 2 and 3 emissions in line with the Local Government Association reporting guidance. To do this, Telford and Wrekin Council have undertaken 'in-house' greenhouse gas (GHG) accounting, using the LGA GHG accounting tool for guidance.

Scope 1: Corporate estate – gas usage
Fleet vehicles – fuel usage

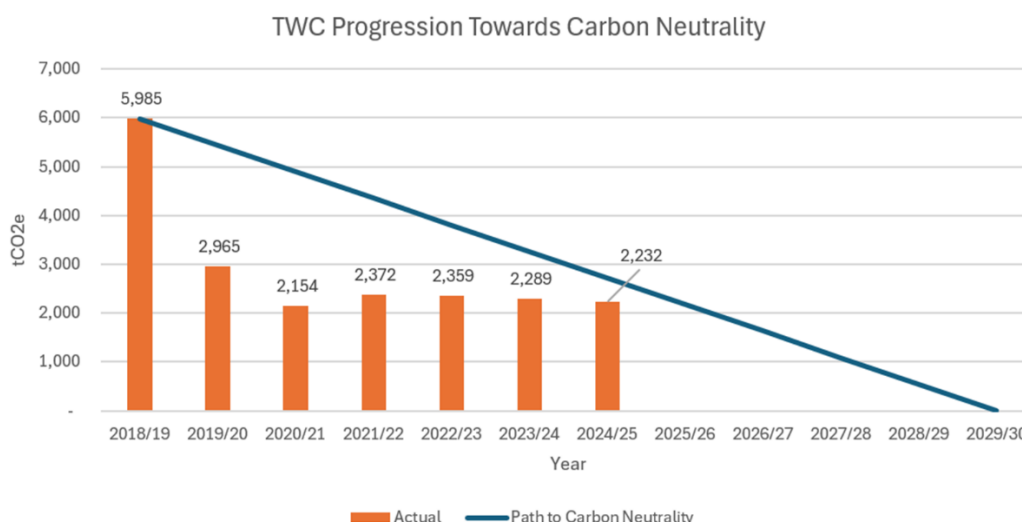
Scope 2: Corporate estate - electricity usage
Street lighting – electricity usage

Scope 3: Business mileage
Water supply & treatment
Electricity - transmission & distribution losses

- 4.48 A summary of the key emission headlines for the 2024/25 reporting year is shown below:



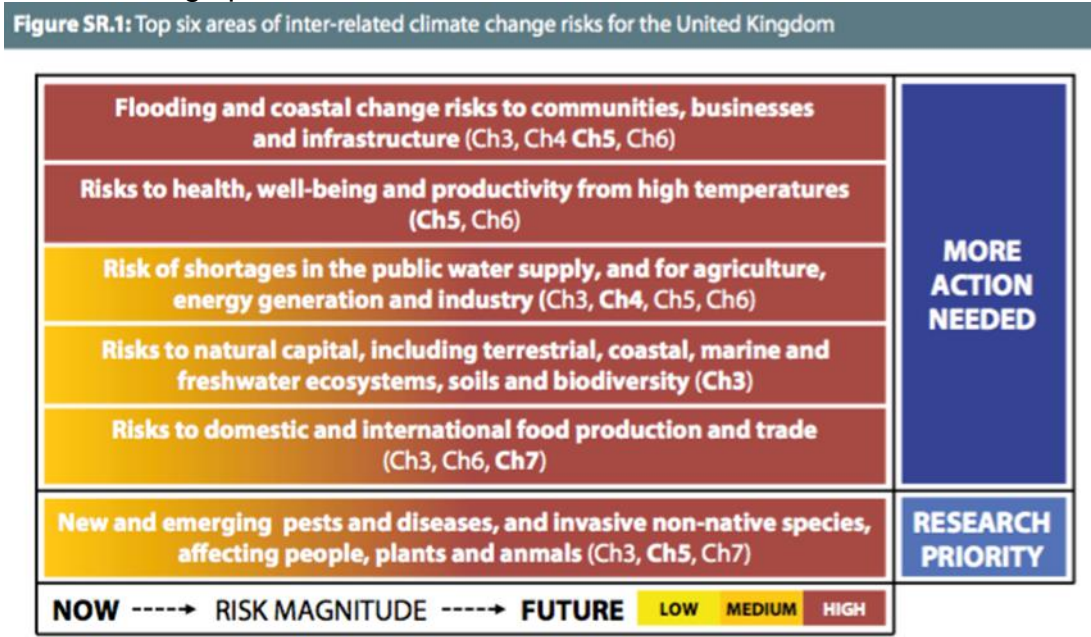
- 4.49 Overall, comparing the 2024/25 reporting period to the 2018/19 baseline data, the Council has reduced its emissions by 63%. In the context of our path to becoming Carbon Neutral by 2030, our emission reductions are currently 8% ahead of target.



- 4.50 Moving to renewable green energy as part of the West Mercia Energy (WME) Green Deal means the Council's emissions from electricity have been hugely reduced. The Council's electricity consumption is made up of electricity used in our buildings and the boroughs streetlighting.
- 4.51 Through active electricity management, consumption has fallen by 28% compared to 2018/19. This includes a 33% drop in streetlighting use following LED replacements and a 23% reduction in our buildings against the 2018/19 baseline, plus a 16% decrease compared to 2023/24.
- 4.52 Both greenhouse gas emissions and gas usage in our corporate estate has fallen by 4% compared to 2023/24 due to increased building efficiencies and decarbonisation interventions.
- 4.53 The Council's transport related emissions in 2024/25 have increased compared to 2023/24. Fleet vehicle related emissions have risen by 18%, while business mileage related emissions have decreased by 7%. This trend is attributed to the launch of the Enterprise car club for business travel and employee behaviours. Some staff members previously may not have claimed mileage for business travel they've done in their personal vehicles, while 100% of journeys undertaken in car club vehicles will be recorded through fuel card data.
- 4.54 To ensure the Council continues its journey to carbon neutrality work has been undertaken to develop a high-level carbon descent pathway identifying measures and projects the Council can implement to reach a 70% reduction in emissions by 2026/27 as the next step to 2030. The Council is working with the Midlands Net Zero Hub (MNZH) to prioritise potential projects based on capital cost; revenue and carbon savings; and eligibility for available funding such as the Green Heat Network Fund (GHNF).

Climate Change Adaptation

4.55 Climate change impacts include both chronic long-term effects such as drier summers and wetter winter but also an increase in the frequency and intensity of weather-related events such as flooding and heat waves. The following table from a study by the Climate Change Committee in 2017 summarises the principal risks climate change poses.



4.56 As a deliverer of key services and a community leader, Telford & Wrekin Council has a responsibility to adopt climate adaptation measures across its operations and to support resilience across the wider borough. Our response to climate change needs to ensure procedures are in place to react to emergencies already being witnessed. Equally we must proactively plan how services are delivered in the future to strengthen the resilience of both the Council and the communities we serve. This commitment is reflected in the Council Plan 2024-2027, which sets out a clear ambition to ensure that ‘communities are resilient to the impact of climate change’. It is also a key Ambition of the Council’s Vision 2032

4.57 In September 2023 Environment Scrutiny considered the Council’s response and this led to the development of the Corporate Climate Change Risk Register which was presented to Cabinet on 16 May 2024 after extensive cross Council engagement, an all-Councillor seminar and further work with the Environment Scrutiny members. The Scrutiny Committee continues to receive annual reports.

Adaptation Risk Register Update – 2025

4.58 The 2025 update to the Council’s Climate Adaptation Risk Register (see Appendix B) demonstrates continued progress on the actions identified in 2024. A significant

number of risks have not required revision this year, as existing controls remain appropriate and effective.

- 4.59 Several actions, particularly those linked to the Prosperity and Investment theme, are scheduled to be implemented following the adoption of the Local Plan, which is anticipated within the next 12 months. Once adopted, the Climate Change Supplementary Planning Document (CCSPD) and the Green Space Standard will be reviewed and updated accordingly to reflect the new planning framework.
- 4.60 The Council continues to invest in digital channels providing a 24/7 service and enabling the Customer Contact Centre to handle higher call volumes, particularly during emergencies such as flooding, events expected to increase in frequency due to climate change.
- 4.61 Significant progress is being made to strengthen the Council's corporate Business Continuity Plans (BCPs). The Climate Adaptation Risk Register is being used to inform these plans, ensuring that relevant climate-related risk controls are embedded within each Business Group's continuity arrangements. The BCPs are expected to be in place by the end of 2026 and will be reviewed and updated annually. This approach ensures that a climate lens is consistently applied when planning for known business risks across the organisation.
- 4.62 In parallel, substantial work has been undertaken to support Town and Parish Councils in developing robust emergency planning for their communities. A dedicated session was held in October 2025 to introduce a new Emergency Plan template, designed to help local councils prepare for a wide range of risks, including flooding, extreme heat and cold, wildfires, and other climate-related hazards.
- 4.63 This template, along with updated and localised information to be published on the Council's 'Dealing with Specific Risks' pages within the 'Emergencies' section of the website, will form a comprehensive 'resource for Town and Parish Councils. This initiative directly addresses an action from the 2024 Climate Adaptation Risk Register. These emergency plans will also be reviewed annually, helping ensure that local communities are actively considering climate impacts and adapting to a changing environment.
- 4.64 Below are some further examples demonstrating actions the Council is taking based on the risk register.

Case Study 1 Arthog

- 4.65 Education and Skills Business Group identified *“Developing locations which are less prone to significant weather events, more sheltered”* as an action in the risk register. During the Easter school break 2025, a group of Children in Care, under the support of the Virtual School, attended an outdoor education residential at Arthog Wales. The planned activity for the morning of the second day was a canoe trip on the Mawddach estuary. However, with a yellow weather warning for heavy rain and strong winds, this activity was assessed as being too risky. Fortunately, the team at Arthog have worked with local landowners to gain access to a sheltered inland pond which allowed the canoeing activity to go ahead at this alternative location.
- 4.66 Since the last report progress has been made as the team have negotiated with local landowners to access a number of sites locally and, where necessary, agreed an annual rent or access fee to use this site, this will ensure availability of suitable activities in extremes of weather. This includes the above-mentioned pool which we now have access to all year round and are able to store equipment at for easy access.



Case Study 2 Local Nature Reserves

- 4.67 **Apley Woods Local Nature Reserve** In response to increased erosion and silting due to heavy rainfall Telford and Wrekin Council Officers, idverde and the Friends of Apley Woods Volunteers worked together to plant phragmites (reeds) in fenced areas around the pool in May 2025. This was recommended by the Environment Agency as a natural way of improving water quality. The pool has suffered from algal blooms and the reeds will act as a natural filtration system for the pool by removing excess nutrients from the water. The reedbeds also will increase oxygenation and help to stabilise the banks, creating additional habitats for wildlife



- 4.68 **Horsehay Pool Local Nature Reserve:** Reed planting in the form of floating rafts has also been provided at Horsehay Pool LNR this spring with additional reeds to be planted by the Friends of Horsehay this summer.
- 4.69 We have also engaged with community organisations to explore the shared challenges we face in adapting to a changing climate. These conversations have

highlighted the importance for every organisation to develop their own adaptation plans, while also recognising the need for stronger collaboration across sectors.

- 4.70 Adapting to and preparing for ongoing climate change is a long-term journey that will take time to develop however as illustrated the foundations are being laid and by working together, we can build a more resilient Borough that is better prepared for the impacts of climate change.
- 4.71 The Council continues to support communities with this where appropriate and will maintain ongoing dialogue to identify further opportunities for collaboration. Some examples include:
- Supporting local flood action groups
 - Using Councillor's Pride Funding to enable community-led adaptation measures
 - Signposting to relevant funding opportunities, such as Reaching Communities England.

Borough - wide partnership work

- 4.72 Although the primary focus of this report is the Councils' own activities, we continue to work with our partners to progress the climate change agenda through the Climate Change Borough Partnership. Four partnerships act as subgroups to the overall partnership.
- Communities Climate Forum
 - Telford Sustainability and Energy Cluster (TSEC).
 - The Shropshire and Telford & Wrekin Integrated Care System Climate Change Board
 - Shropshire Good Food Partnership.
- 4.73 The Council remains committed to supporting the Borough Climate Change Partnership with the 2024 annual conference taking place at the Park Lane Centre in Woodside. This brought together partners communities and businesses borough-wide to share updates, showcase action, and develop new opportunities for collaboration. Discussions focused on both climate change mitigation and adaptation, reinforcing the shared commitment to building a more sustainable and resilient future.
- 4.74 In preparation for the 2025 conference over the summer, we commissioned an independent facilitator to lead targeted engagement with local communities, including parish and town councils, community buildings, and voluntary and community organisations. The aim was to deepen collective understanding of the environmental challenges we face, explore opportunities for stronger collaboration, and identify ways to build community resilience, supporting and involving local residents along the way. As a result, two potential projects were identified for

Telford & Wrekin Becoming Carbon Neutral and Climate Change Adaptation - update report

further exploration by attendees. shared communications and decarbonising community buildings

- 4.75 The 2025 Conference included speakers from the ICS, Fabweld, Shropshire Good Food Partnership, and Randlay Community Centre showcasing their work inspiring others and shared examples of their work to inspire and inform others. The event provided a further strengthening connections across the network.

Business Support

- 4.76 Telford's businesses play a vital role in achieving the Borough's sustainability and climate change ambitions. Many of the area's employers are leading the way in addressing climate challenges and driving forward sustainable practices.

DeterTech

"Sustainability is at the heart of DeterTech's strategic plans. In early 2026, we will manufacture and undertake end-of-life waste processing will be brought in-house, which provides us the opportunity to fully understand and influence our impact on the environment. DeterTech have control over supplier selection and processing of waste streams, holding suppliers to account for their environmental performance".

Richard Harris - Director of Technical Services DeterTech



Fabweld Steel Products

At FSP, sustainability is embedded in our business strategy, not only as a commitment to reducing carbon emissions and increasing self-sufficiency, but as a powerful driver for operational efficiency, cost reduction, and competitive advantage. Our sustainability initiatives have enabled us to streamline processes, optimize resource use, and deliver innovative solutions that support both environmental and commercial goals. By integrating sustainable practices throughout our operations, we have strengthened our market position and unlocked new opportunities for growth. For FSP, sustainability is not just a responsibility it is a catalyst for progress and long-term success.

Wayne Carter – Managing Director Fabweld Steel Products



- 4.77 The Council continues to support the **Telford Sustainability and Energy Cluster (TSEC)**. The cluster foster business collaboration, drives sustainable practices, and is addressing common challenges among Telford businesses that will create a positive environmental, social and economic impact. In April 2025 TSEC considered the impact of the requirements of Environmental, Social, and Governance (ESG) which refers to a set of standards for a company's operations that socially conscious investors use to screen potential investments. Under Corporate Social Responsibility (CSR), businesses are increasingly expected to align with ESG principles.



- 4.78 The **Marches Energy Grant (MEG)** programme closed in April 2025. Key outcomes included awarding 21 business grants and 2 community centre grants totally £483,532 to support. These grants supported energy efficiency improvements and sustainability initiatives across local organisations, contributing to the borough's wider climate and carbon reduction goals.

Car dealership TJ Vickers received £55,361 towards installing solar panels on its Trench car showroom. The panels are expected to generate over 72,400 kWh annually, equivalent to the electricity use of around 20 average UK homes. Thanks to the grant, the investment is projected to pay back within four years.



Plastic free

4.79 Telford & Wrekin Council continue to act as the secretariat for the Plastic Free Taskforce who meet to share experiences and work towards accreditation. This includes running awareness-raising campaigns and encouraging more local businesses and community organisations to sign up to a plastic-free pledge, committing to remove as many single-use plastics from their operations as possible. The taskforce remains focused on building momentum through local champions, targeted outreach, and celebrating success stories to inspire wider uptake.

4.80 A borough wide campaign was run over the summer covering Plastic Free July which included sharing tips, resources and information to help residents make simple swaps to reduce their use of single-use plastic. The taskforce also took the opportunity to lobby big manufacturers to encourage them to reduce plastic packaging and adopt sustainable alternatives, whilst also reaching out to local manufacturers in the borough to encourage more to get involved in the local campaign. This include features on businesses such as The Little Green Pantry in Wellington



Supporting Community Projects

4.81 To date, the Council has awarded more than £348k to a number of community projects through the Council's Climate Change Fund. Most recently this has included:

4.82 **Climate Action Hub Telford** who, as a result of their grant, have been able to establish a presence in Wellington by holding free monthly Sustainable Sunday Events at Belmont Hall. Each event focuses on a different aspect of sustainability and looks to engage members of the public in an interactive and informative way. Attendees are treated to refreshments and sustainable plant-based snacks.

In 2024:

Telford & Wrekin Becoming Carbon Neutral and Climate Change Adaptation - update report

- A total of 918 people and 189 stallholders have attended their Sustainable Sunday events.
- People have donated 888.5 Kg of unwanted items to them, and they have re-homed 999 items.
- They also re-homed 105 Kg of clothes at their Sustainable Fashion event.
- People brought in 118 Kg of recyclable items which were sent to Terracycle and Recycling for Good Causes, and 30.2 Kg electrical items for recycling.
- They loaned out 46 books from their Eco-Library
- They served hundreds of plant-based meals and snacks



- 4.83 **Hollinswood & Randlay Parish Council** Thanks to support from the Climate Change Fund, Hollinswood & Randlay Parish Council installed solar panels at Randlay Community Centre in spring 2024. One year on, the system has generated 30 MWh of electricity, enough to power 10 homes annually. Of this, 7 MWh was used onsite and 23 MWh exported to the grid, significantly reducing energy costs and supporting community work. The project also delivered an estimated carbon saving of 6,212 kg CO₂e.
- 4.84 Building on this success, the Parish Council secured a further £60k from the Marches Energy Grant, enabling investment across all three of their sites. In total, around £130k has been invested, with £70k provided through grants including 10k from the Climate Change Fund.
- 4.85 **Sutton Hill Church.** In August 2023, The Climate Change Fund helped Sutton Hill Church replace all the old ground floor windows in the church building. The 28mm Double Glazed 'A' Rated Argon Filled windows represent a significant upgrade on the previous windows which were leaky, inefficient, and outdated. Now Sutton Hill Church can benefit from greater thermal efficiency of their building, reducing costs for heating and lower emissions. The users of the church will also benefit from a more comfortably heated and insulated area. The before and after example below also highlights to aesthetic improvement these windows have provided to Sutton Hill Church.



Next steps

4.86 To build on the progress made to date and to ensure that the Council's carbon mitigation work fully contributes to wider issues of extreme weather and fuel poverty the following areas of work are seen as a priority:

- To keep the Corporate Climate Change Action Plan and Adaptation Risk Register under constant review and to work across the authority to identify new initiatives.
- To continue to monitor progress on a quarterly basis to ensure change is being made and to identify and address challenges quickly. The assignment of actions to specific officers will be continued to embed accountability into the plan.
- To continue greenhouse gas accounting and comparison against the decarbonisation pathway to effectively track progress to net zero.
- To continue to explore potential sites for corporate renewable energy generation.
- To ensure that any actions to address climate change continue to support Telford's residents, community groups and businesses address the impact of increases in fuel prices and fuel poverty.
- To continue to raise awareness of climate change to staff to support better-informed decision making that incorporates climate change and its impacts.
- To continue to share the positive climate work happening within the Council and across the community by strengthening our existing communication channels.
- To continue to work with our partners across the Borough to support wider climate change actions.

5 Alternative Options

5.1 The alternative option would be to take no further action, which would result in the Council failing to deliver on its climate change commitments. This approach carries significant reputational risk, particularly given the Council's role as a community leader. Neglecting issues such as building energy efficiency and renewable energy development would lead to increased fuel costs and missed

income opportunities. It would also negatively affect the health, wellbeing, and economic resilience of businesses, communities, and residents across Telford & Wrekin.

- 5.2 Failure to produce and regularly update a climate change adaptation risk register would prevent the Council from identifying service-related risks and responding effectively to climate-related emergencies. This could result in higher future costs and increased disruption to services, reputational damage, and reduced resilience to extreme weather events.

6 Key Risks

- 6.1 The Climate Change Committee's *Independent Assessment of UK Climate Risk for the UK* (CCRA3), published in June 2021³ sets out the priority climate change risks for the UK which are also relevant locally were action not to be taken. In summary, risks in the report include:

- The impacts of climate change on the natural environment.
- An increase in the range, quantities, and consequences of pests, pathogens, and invasive species.
- more frequent and severity of flooding, and coastal erosion, causing damage to infrastructure services.
- A reduction in public water supplies due to increasing periods of water scarcity.
- The impact of extreme temperatures, high winds, and lightning on the transport network.
- The impact of increasing high temperatures on people's health and wellbeing.
- Disruption to the delivery of health and social care services due to a greater frequency of extreme weather.
- Damage to cultural heritage assets as a result of temperature, precipitation, groundwater and landscape changes.
- Impacts internationally that may affect the UK, such as risks to food availability, safety and security, risks to international law, trade routes and public health.

7.0 Council Priorities

- 7.1 The Council's work on climate change and sustainability is a direct response to the Council's priority "Our natural environment is protected, and the Council has a leading role in addressing the climate emergency". However, as a cross-cutting agenda it also has a significant contribution towards all other Council priorities including:

- Every child, young person, and adult lives well in their community.
- Everyone benefits from a thriving economy.

³ <https://www.ukclimaterisk.org/wp-content/uploads/2021/06/CCRA-Evidence-Report-England-Summary-Final.pdf>

- All neighbourhoods are a great place to live.
- A community-focussed, innovative Council providing efficient, effective, and quality services.

8.0 Financial Implications

- 8.1 The initiatives outlined in the report are funded from a combination of Council funding, and external grant funding. Finance will provide ongoing support in relation to any bids for external funding as required. Scheme expenditure is monitored on a regular basis. Financial implications are considered as part of the Risk Register.

9.0 Legal and HR Implications

- 9.1 The Climate Change Act 2008 (as amended) establishes a legally binding target to reduce the UK's greenhouse gas emissions by 100% by 2050 when compared with the 1990 baseline. At a local level, Section 19(1A) of the Planning and Compulsory Purchase Act 2004 requires local planning authorities to include in their local plans, policies designed to secure that the development and use of land in the local planning authority's area contribute to the mitigation of, and adaptation to, climate change. In the management of its activities, provision of its services and performance of its functions, local Councils are able to play a vital role in meeting the challenges posed by climate change. The Council has wide scope to decide how best to address these challenges.
- 9.2 The Council has the legal power to undertake the activities set out in the report. Implementation of the proposals in this report may give rise to specific legal issues upon which legal advice will be provided as necessary.
- 9.3 There are no specific human resource implications arising from this report.

10.0 Ward Implications

- 10.1 This report has a borough wide impact.

11.0 Health, Social and Economic Implications

- 11.1 Climate change is expected to continue having a significant impact on the health, social, and economic wellbeing of residents in Telford and Wrekin. For example, the summer of 2025 was the warmest on record, with prolonged heatwaves posing serious health risks—particularly to vulnerable groups such as older adults, children, and those with existing health conditions.
- 11.2 Many of the actions outlined in the Council's Climate Change Plan offer substantial health co-benefits, including improved air quality, increased access to green spaces, and better housing energy efficiency. These measures not only

support climate resilience but also contribute to healthier, more equitable communities. The impact of climate change is also considered in the Council's Health and Well Being Strategy 2023-2027

12.0 Equality and Diversity Implications

- 12.1 The Council's Climate Change Action Plan and Adaptation Risk Register take account of the legal requirement to pay due regard to the aims of the Public Sector Equality Duty. Key to this is consideration of people's specific needs based on their protected characteristics.

People who share protected characteristics of age, race, ethnicity, and disability are often disproportionately affected by climate change and its consequences. This is true locally and internationally. Extreme weather events, for example heat waves most detrimentally affect older residents and those with pre-existing respiratory and cardiovascular conditions.

The success of our climate change activity relies on active participation by the whole community. Steps are taken to make sure that events are inclusive, and the differing needs of individuals are considered so that they can access activities and contribute effectively

13.0 Climate Change, Biodiversity and Environmental Implications

- 13.1 This report sets out how Telford and Wrekin Council is addressing the current and future impacts of climate change and is therefore a key mechanism to support the Council's climate change work.

14.0 Appendices

- A Telford and Wrekin Council Carbon Neutral Action Plan
- B Telford and Wrekin Strategic Climate Change Adaptation Risk Register

15.0 Report Sign Off

Signed off by	Date sent	Date signed off	Initials
Finance	17/11/2025	18/11/2025	AEM
Legal	17/11/2025	19/11/2025	EH
KKynaston	13/11/2025	24/11/2025	KK